

K Art



40-80 kg / 120 kg + System 0600





Für Holztüren

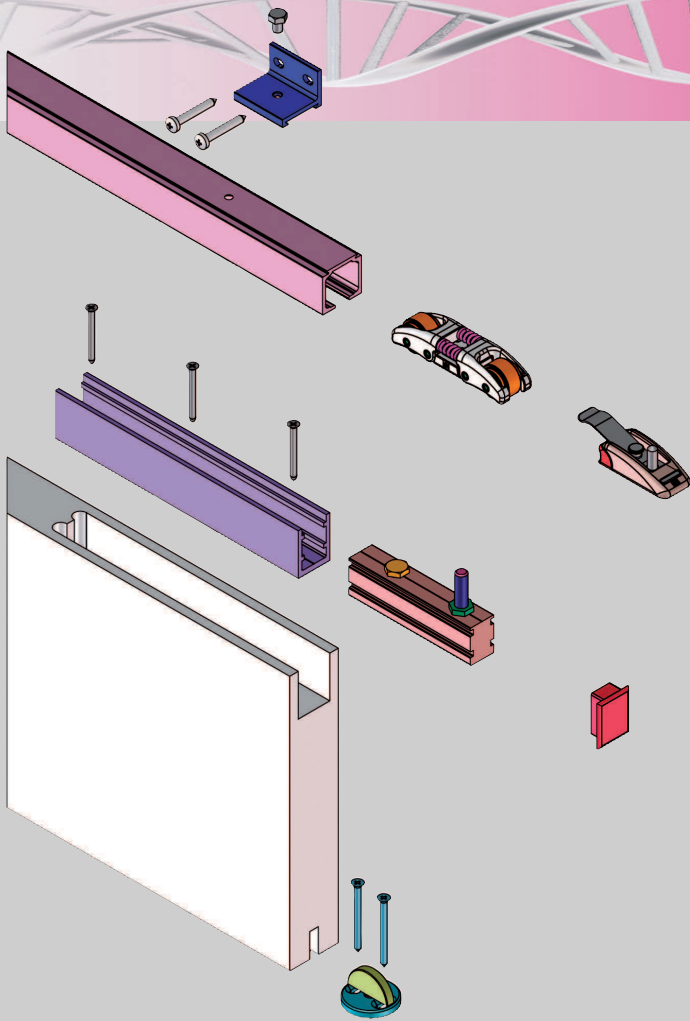
for wooden doors

K Art 40-80 kg / 120 kg + System 0600 Für Holztüren - For wooden doors

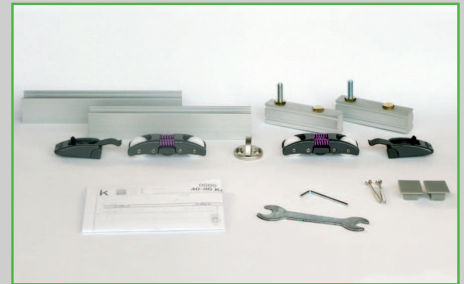
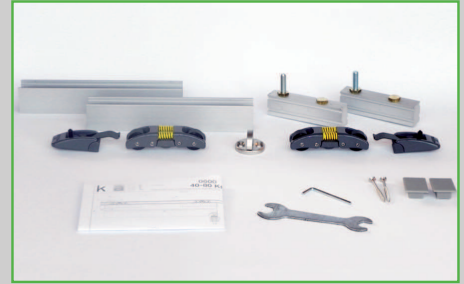
SYSTEM	Laufsystem Sliding system	Besonderheiten Characteristics	Tür Door	Tragkraft Capacity	Seite Page
K Art 40/80 + Sys 0600	Oben laufend Upper	Schiebetürsystem Sliding	1-2	40/80 kg	38
K Art 40/80 ABS + Sys 0600	Oben laufend Upper	Lösung mit Schiene Solution with track	1-2	40/80 kg	40
K Art 40/80 ABS + Sys 0600	Oben laufend Upper	Lösung mit Querträger Solution with beam	1-2	40/80 kg	42
K Art 120 + Sys 0600	Oben laufend Upper	Schiebetürsystem Sliding	1-2	120 kg	44

Verfügbare Laufschiene für diese Systeme - Available tracks for these systems

Artikelnummer Track article	Verwendbar für folgende Systeme System reference
KART 1 	K Art 40/80 + Sys 0600
KART 1 ABS 	K Art 40/80 ABS + Sys 0600 Lösung mit Schiene Solution with track
KART 3 256 	K Art 40/80 ABS + Sys 0600 Lösung mit Querträger Solution with beam
KART 2 	K Art 120 + Sys 0600



**Holzschiebetürbeschlag für Türen,
Flügelgewicht 40/80 kg**
*Sliding system for wooden doors,
capacity 40/80 kg*



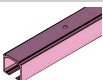
K Art (40 kg)

- KIT Art. KART 0600 40**
- Art. 0600/51**
2 Stk. Befestigungsprofil
Retainer profile
pcs. 2
 - Art. 0600/52**
2 Stk. Laufwerk-Befestigungsanker
Suspension profile
pcs. 2
 - Art. 0600/54**
2 Stk. Verschlusskappe
Cap rubber pcs. 2
 - Art. KART 51**
2 Stk. Laufwerk K Art 40 kg
Roller K Art 40 kg pcs. 2
 - Art. 7550 13 NS**
1 Stk. Untere Holzführung
Nickel Matt
Lower wood guide pcs. 1
satin nickel
 - Art. KART 12**
2 Stk. Fangstopper
Stop brake pcs. 2
 - 1 Stk. Gabelschlüssel
Fork wrench pcs. 1


K Art (80 kg)

- KIT Art. KART 0600 80**
- Art. 0600/51**
2 Stk. Befestigungsprofil
Retainer profile
pcs. 2
 - Art. 0600/52**
2 Stk. Laufwerk-Befestigungsanker
Suspension profile
pcs. 2
 - Art. 0600/54**
2 Stk. Verschlusskappe
Cap rubber pcs. 2
 - Art. KART 52**
2 Stk. Laufwerk K Art 80 kg
Roller K Art 80 kg pcs. 2
 - Art. 7550 13 NS**
1 Stk. Untere Holzführung
Nickel Matt
Lower wood guide pcs. 1
satin nickel
 - Art. KART 12**
2 Stk. Fangstopper
Stop brake pcs. 2
 - 1 Stk. Gabelschlüssel
Fork wrench pcs. 1

Art. KART 1 m 6
Art. KART 1 300 m 3
K Art Schiene 40/80 kg
K Art track 40/80 kg



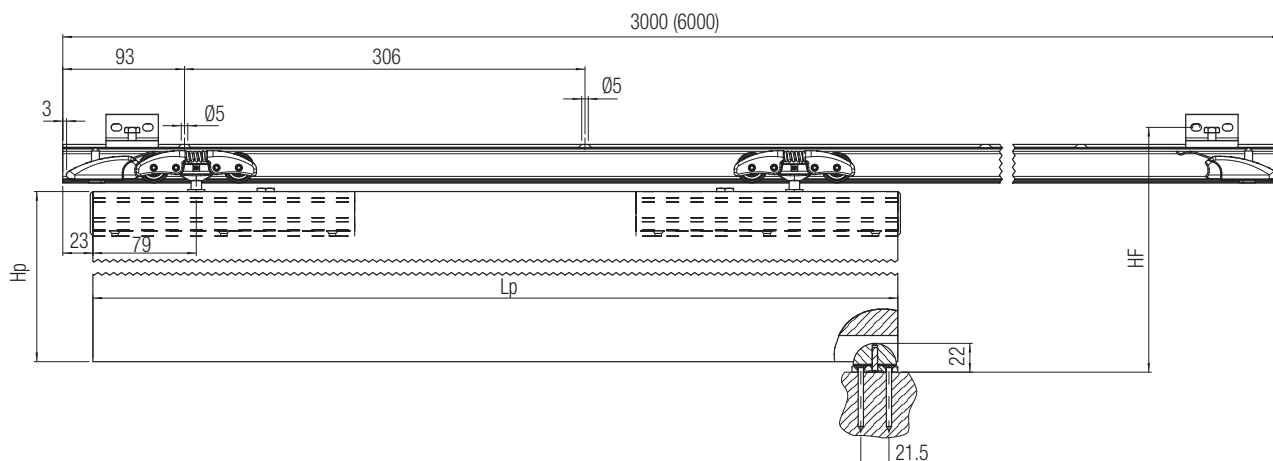
Art. 0500/4
Wandbefest. winkel
Soporte de sujeción lateral



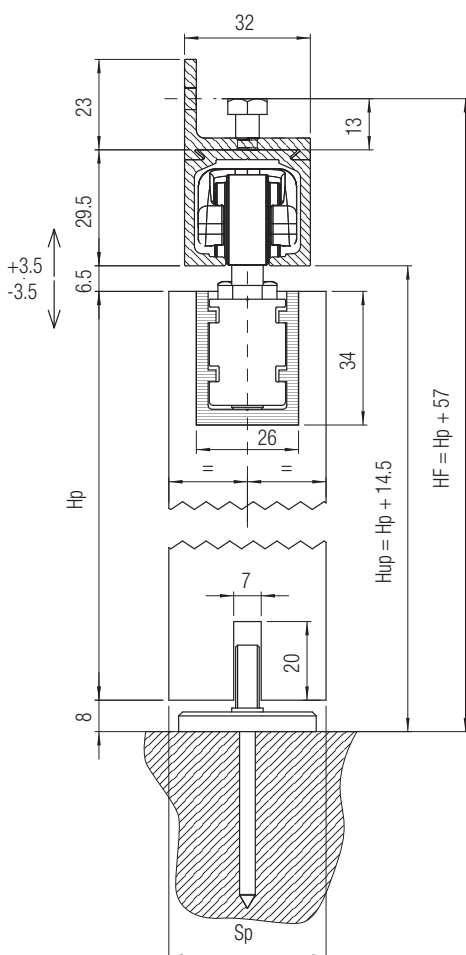
K Art 40/80 + SYSTEM 0600

Pat-Pending

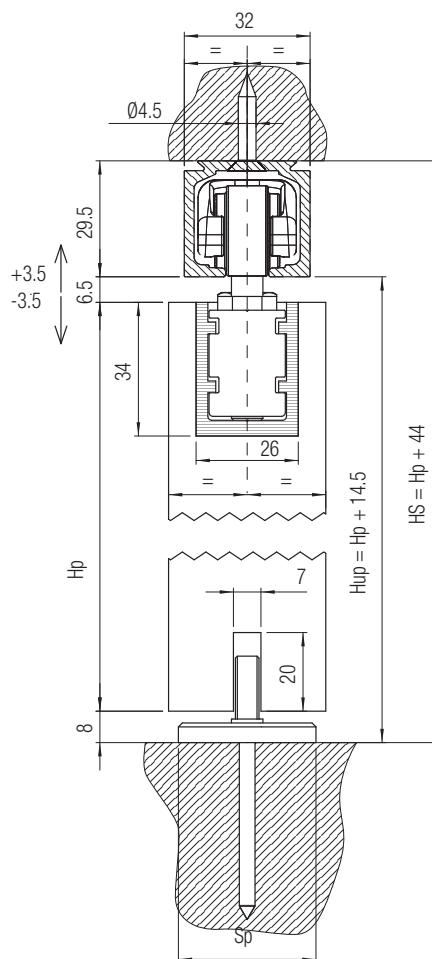
KOBLENZ
BESCHLÄGE - HARDWARE



Befestigung mit Winkel für Wandbefestigung
Fixing with bracket

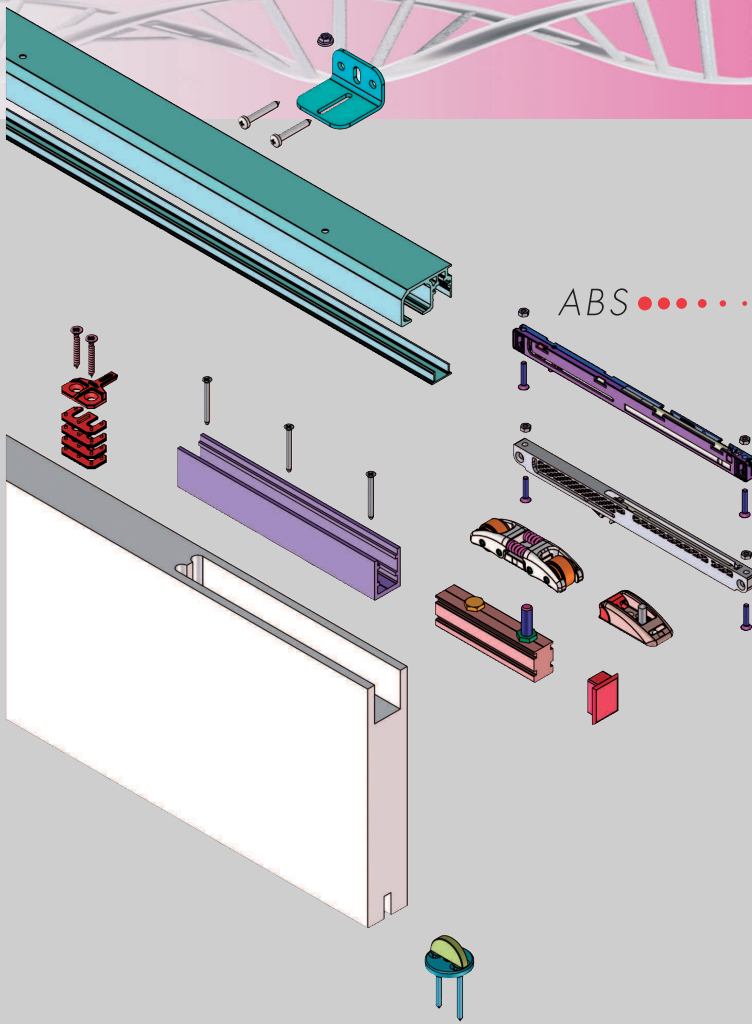


Befestigung mit Schrauben
Fixing with screws

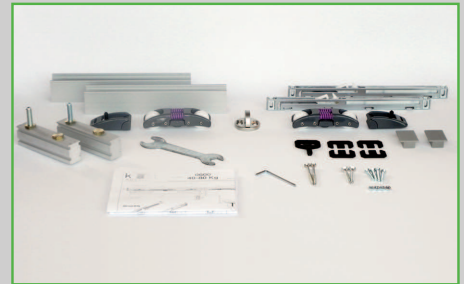


Lp= Türblattbreite
Hp= Türblatthöhe
Sp= Türblattdicke
HF= Wandbefestigungshöhen
HS= Deckenhöhe
Hup= Durchgangshöhe
P.S.: Alle Höhen beziehen sich auf Einsatz der mitgelieferten, 40mm langen, Schrauben.

Lp= Door leaf width
Hp= Door leaf height
Sp= Panel thickness
HF= Wall fixing heights
HS= Ceiling height
Hup= Height passage opening
N.B. all heights are referred to the use of screws having 40 mm length included in the kit.



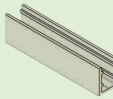
**Holzschiebetürbeschlag für Türen,
Flügelgewicht 40/80 kg
Lösung mit Schiene**
*Sliding system for wooden doors,
capacity 40/80 kg
solution with track*



K Art (40 kg)

KIT Art. KART 0600 40 ABS

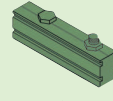
Art. 0600/51
2 Stk.
Befestigungsprofil
Retainer profile
pcs. 2



Art. 7550 13 NS
1 Stk. Untere Holzführung
Nickel Matt
Lower wood guide pcs. 1 satin nickel



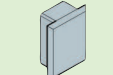
Art. 0600/52
2 Stk. Laufwerk-
Befestigungsanker
Suspension profile
pcs. 2



Art. KART 14
2 Stk.
Fangstopper
Stop brake
pcs. 2



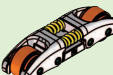
Art. 0600/54
2 Stk. Verschlusskappe
Cap rubber pcs. 2



Art. 0860 7
2 Stk.
ABS 40 kg
ABS 40 kg
pcs. 2



Art. KART 51
2 Stk. Laufwerk K Art 40 kg
Roller K Art 40 kg pcs. 2



Art. 0860 5
1 Stk.
pcs. 1



1 Stk. Gabelschlüssel
Fork wrench pcs. 1

Art. KART 1 ABS m 6
Art. KART 1 300 ABS m 3
K Art Schiene 40/80 kg ABS
K Art track 40/80 kg ABS



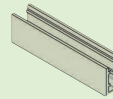
Art. KART 8
Wandbefest. winkel 40/80 kg
Side mount
40/80 kg



K Art (80 kg)

KIT Art. KART 0600 80 ABS

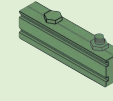
Art. 0600/51
2 Stk.
Befestigungsprofil
Retainer profile
pcs. 2



Art. 7550 13 NS
1 Stk. Untere Holzführung
Nickel Matt
Lower wood guide pcs. 1 satin nickel



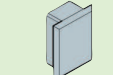
Art. 0600/52
2 Stk. Laufwerk-
Befestigungsanker
Suspension profile
pcs. 2



Art. KART 14
2 Stk.
Fangstopper
Stop brake
pcs. 2



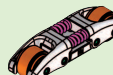
Art. 0600/54
2 Stk. Verschlusskappe
Cap rubber pcs. 2



Art. 0860 8
2 Stk.
ABS 80 kg
ABS 80 kg
pcs. 2



Art. KART 52
2 Stk. Laufwerk K Art 80 kg
Roller K Art 80 kg pcs. 2



Art. 0860 5
1 Stk.
pcs. 1



1 Stk. Gabelschlüssel
Fork wrench pcs. 1

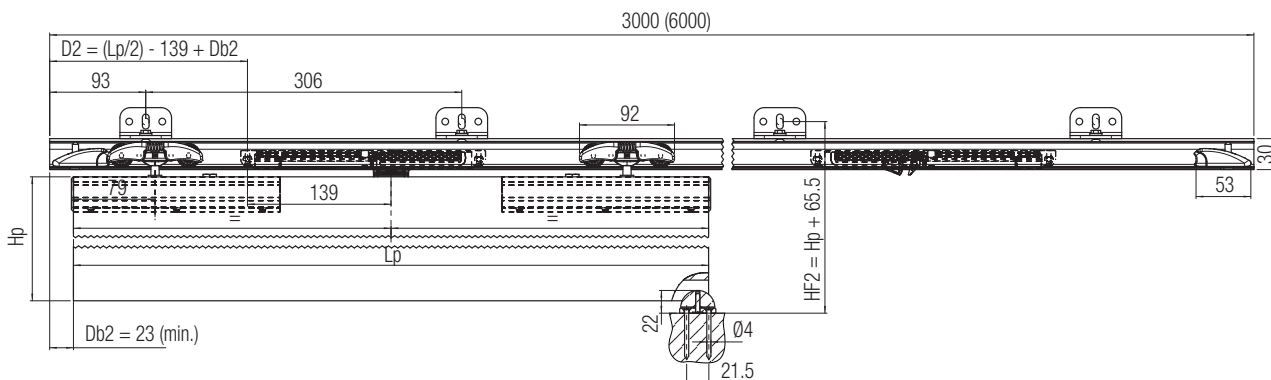
Art. KART 6 m 3
Abdeckung für ABS
Cover for ABS



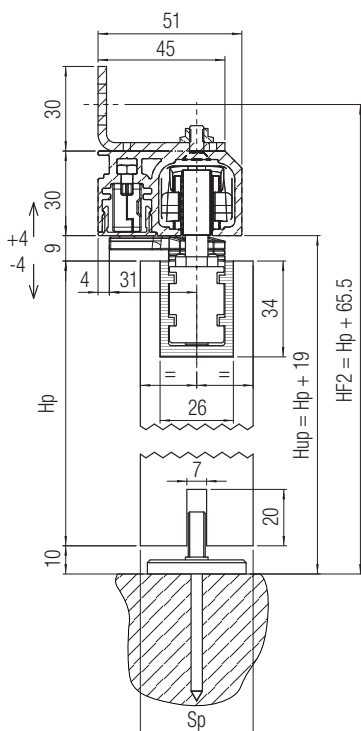
K Art 40/80 ABS + SYSTEM 0600

Pat-Pending

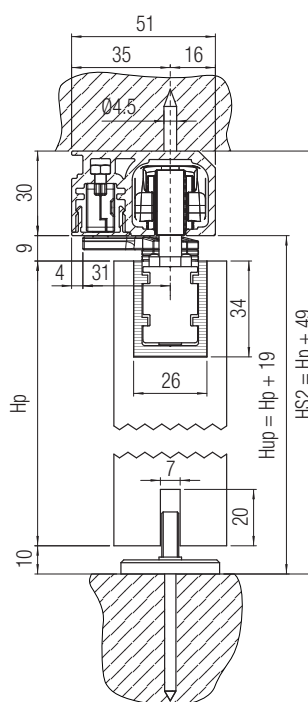
KOBLENZ
BESCHLÄGE - HARDWARE



Mit ABS: Befestigung mit Winkel für Wandbefestigung
Mit ABS: Fixing with bracket

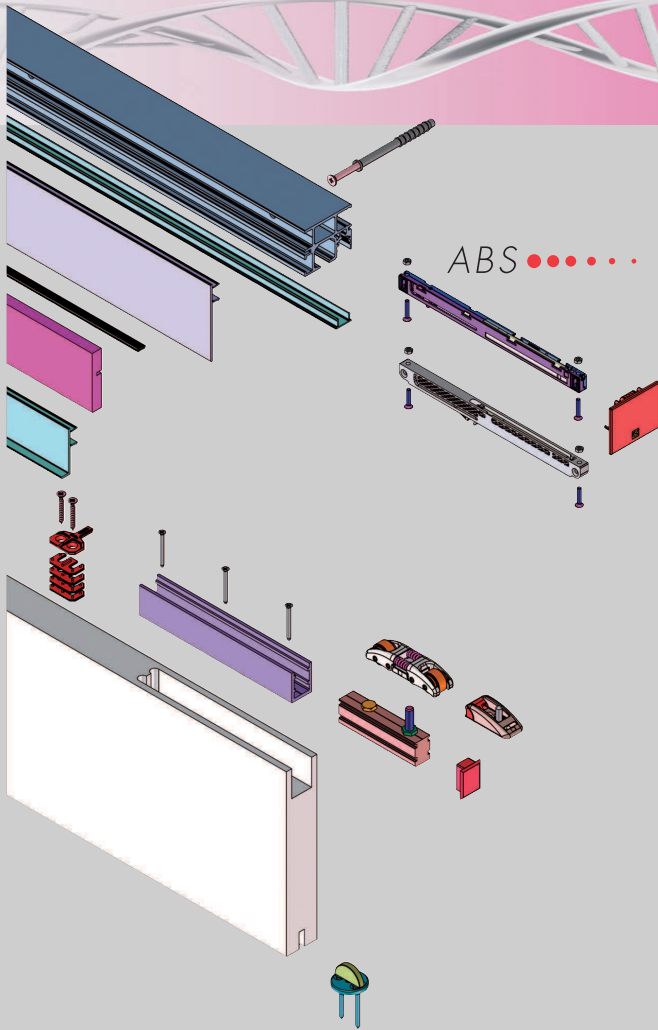


Mit ABS: Befestigung mit Schrauben
Mit ABS: Fixing with screws

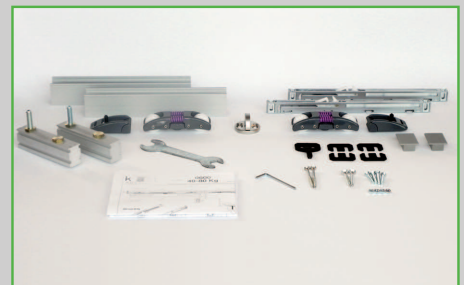


Lp= Türblattbreite
Hp= Türblatthöhe
Sp= Türblattdicke
D2= Abstand Befestigung ABS an einer einzelnen Schiene
(lt. abgebildeter Gestaltung)
Db2= Abstand Türanschlag bis Ende der einzelnen Schiene
HF2= Wandbefestigungshöhen
HS2= Deckenhöhe
Hup= Durchgangshöhe
P.S.: Alle Höhen beziehen sich auf Einsatz der
mitgelieferten, 40mm langen, Schrauben.

Lp= Door leaf width
Hp= Door leaf height
Sp= Panel thickness
D2= Distance fixing ABS on single track
(as per illustrated configuration)
Db2= Distance door post up to track till the end of the single track
HF2= Wall fixing heights
HS2= Ceiling height
Hup= Height passage opening
N.B. all heights are referred to the use of screws having
40 mm length included in the kit.

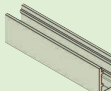

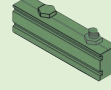



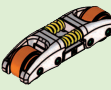




**Holzschiebetürbeschlag für Türen,
Flügelgewicht 40/80 kg
Lösung mit Querträger**
*Sliding system for wooden doors,
capacity 40/80 kg
solution with beam*



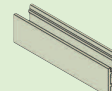

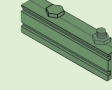






K Art (40 kg)

KIT Art. KART 0600 40 ABS

<p>Art. 0600/51 2 Stk. Befestigungsprofil Retainer profile pcs. 2</p> 	<p>Art. 7550 13 NS 1 Stk. Untere Holzführung Nickel Matt Lower wood guide pcs. 1 satin nickel</p> 
<p>Art. 0600/52 2 Stk. Laufwerk- Befestigungsanker Suspension profile pcs. 2</p> 	<p>Art. KART 14 2 Stk. Fangstopper Stop brake pcs. 2</p> 
<p>Art. 0600/54 2 Stk. Verschlusskappe Cap rubber pcs. 2</p> 	<p>Art. 0860 7 2 Stk. ABS 40 kg ABS 40 kg pcs. 2</p> 
<p>Art. KART 51 2 Stk. Laufwerk K Art 40 kg Roller K Art 40 kg pcs. 2</p> 	<p>Art. 0860 5 1 Stk. pcs. 1</p> 
<p>1 Stk. Gabelschlüssel Fork wrench pcs. 1</p> 	

K Art (80 kg)

KIT Art. KART 0600 80 ABS

<p>Art. 0600/51 2 Stk. Befestigungsprofil Retainer profile pcs. 2</p> 	<p>Art. 7550 13 NS 1 Stk. Untere Holzführung Nickel Matt Lower wood guide pcs. 1 satin nickel</p> 
<p>Art. 0600/52 2 Stk. Laufwerk- Befestigungsanker Suspension profile pcs. 2</p> 	<p>Art. KART 14 2 Stk. Fangstopper Stop brake pcs. 2</p> 
<p>Art. 0600/54 2 Stk. Verschlusskappe Cap rubber pcs. 2</p> 	<p>Art. 0860 8 2 Stk. ABS 80 kg ABS 80 kg pcs. 2</p> 
<p>Art. KART 52 2 Stk. Laufwerk K Art 80 kg Roller K Art 80 kg pcs. 2</p> 	<p>Art. 0860 5 1 Stk. pcs. 1</p> 
<p>1 Stk. Gabelschlüssel Fork wrench pcs. 1</p> 	


Art. KART 3 256 m 2,56
Querträger mit
Abdeckkappen 40/80 kg
Beam with closing plate 40/80 kg



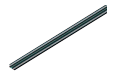
Art. KART 5 m 3
Blende für Zwischendecke
Pelmet for suspended ceiling



Art. KART 9 m 3
Blende
Pelmet



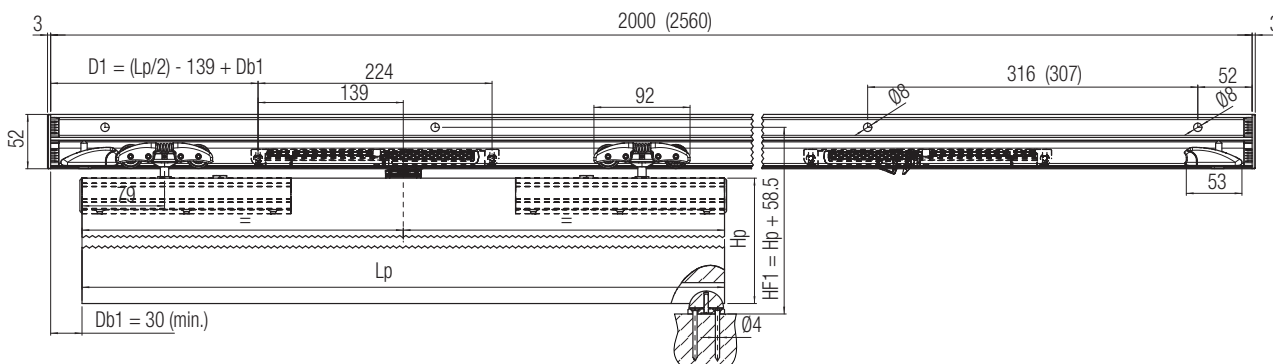
Art. KART 6 m 3
Abdeckung für ABS
Cover for ABS



K Art 40/80 ABS + SYSTEM 0600

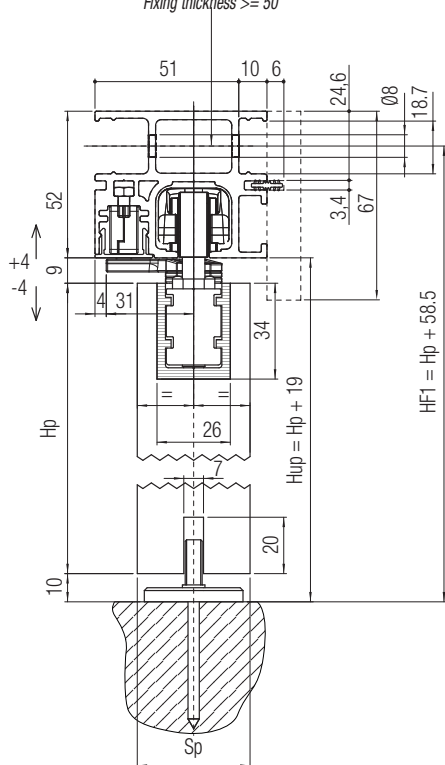
Pat-Pending

KOBLENZ
BESCHLÄGE - HARDWARE

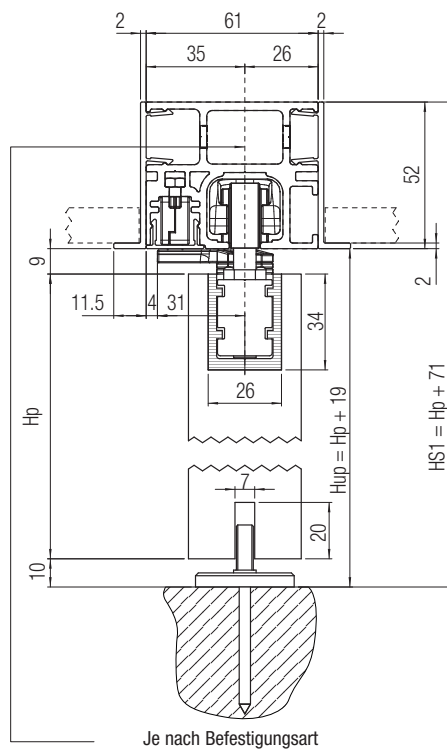


Mit ABS: Befestigung mit Winkel für Wandbefestigung Mit ABS: Fixing with bracket

Es wird die Verwendung von verlängerten durchgehenden Dübeln Ø8, Befestigungsdicke >= 50 empfohlen
We suggest the use of lengthened persistent dowels Ø8, Fixing thickness >= 50



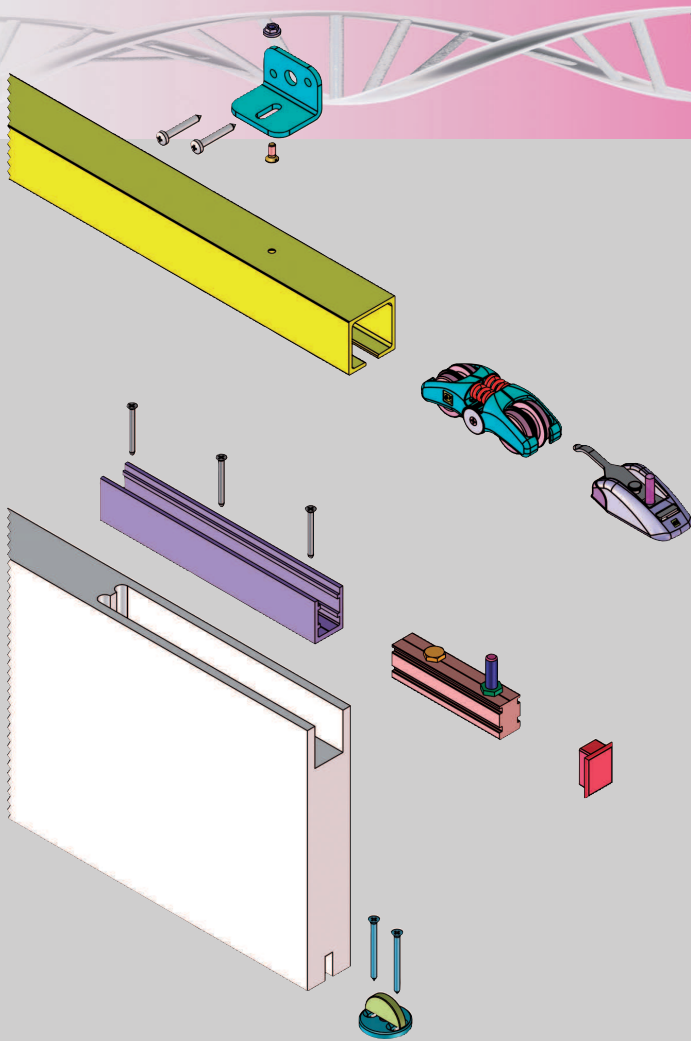
Mit ABS und Zubehör zum Bau von Gips- Zwischenwänden With ABS and accessories to make gypsum plasterboard partition walls



Je nach Befestigungsart
Bohrungen vorsehen
Predispose drillings depending on the type of fixing

Lp= Türblattbreite
Hp= Türblatthöhe
Sp= Türblattdicke
D1= Befestigungsabstand ABS am Querträger
(lt. abgebildeter Gestaltung)
Db1= Abstand Türanschlag ausgehend vom Querträgerende
HF1= Wandbefestigungshöhen
HS1= Deckenhöhe
Hup= Durchgangshöhe
P.S.: Alle Höhen beziehen sich auf Einsatz der mitgelieferten, 40mm langen, Schrauben.

Lp= Door leaf width
Hp= Door leaf height
Sp= Panel thickness
D1= Distance fixing ABS
(as per illustrated configuration)
Db1= Distance door post starting from the end of the beam
HF1= Wall fixing heights
HS1= Ceiling height
Hup= Height passage opening
N.B. all heights are referred to the use of screws having 40 mm length included in the kit.



**Holzschiebetürbeschlag für Türen,
Flügelgewicht 120 kg
Sliding system for wooden doors,
capacity 120 kg**



K Art (120 kg)

KIT Art. KART 0600 120

Art. 0600/51
2 Stk. Befestigungsprofil
Retainer profile
pcs. 2

Art. 0600/52
2 Stk. Laufwerk-
Befestigungsanker
Suspension profile
pcs. 2

Art. 0600/54
2 Stk. Verschlusskappe
Cap rubber pcs. 2

Art. KART 53
2 Stk. Laufwerk K Art 120 kg
Roller K Art 120 kg pcs. 2

Art. 7550 13 NS
1 Stk. Untere Holzführung
Nickel Matt
Lower wood guide pcs. 1
satın nickel

Art. KART 13
2 Stk. Fangstopper
Stop brake pcs. 2

1 Stk. Gabelschlüssel
Fork wrench pcs. 1

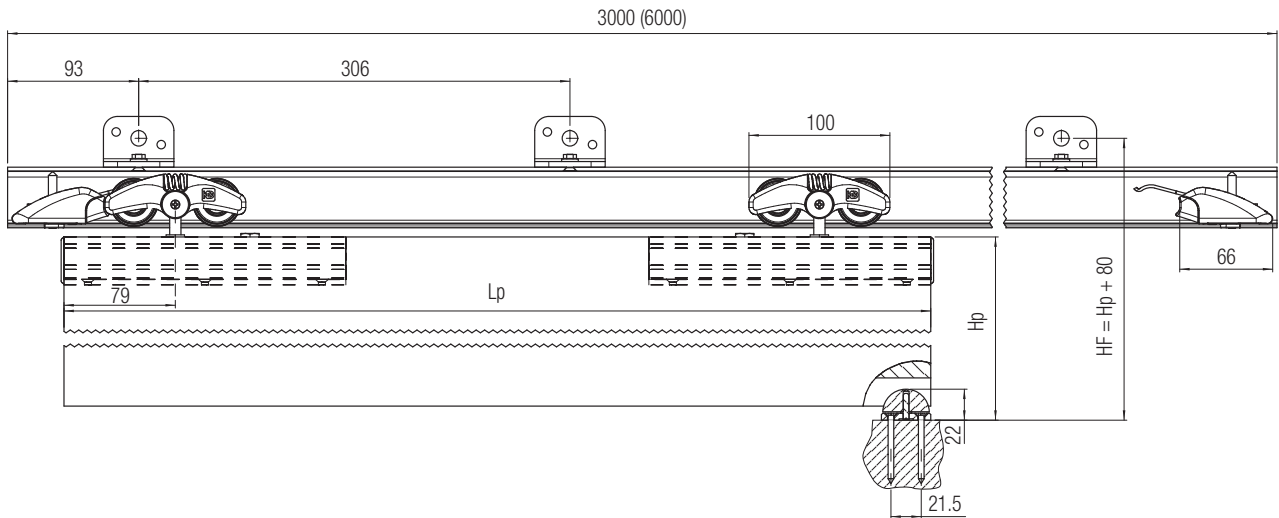
Art. KART 2 m 6
Art. KART 2 300 m 3
K Art Schiene 120 kg
K Art track 120 kg

Art. KART 4
Wandbefest. winkel 120 kg
Side mount
120 kg

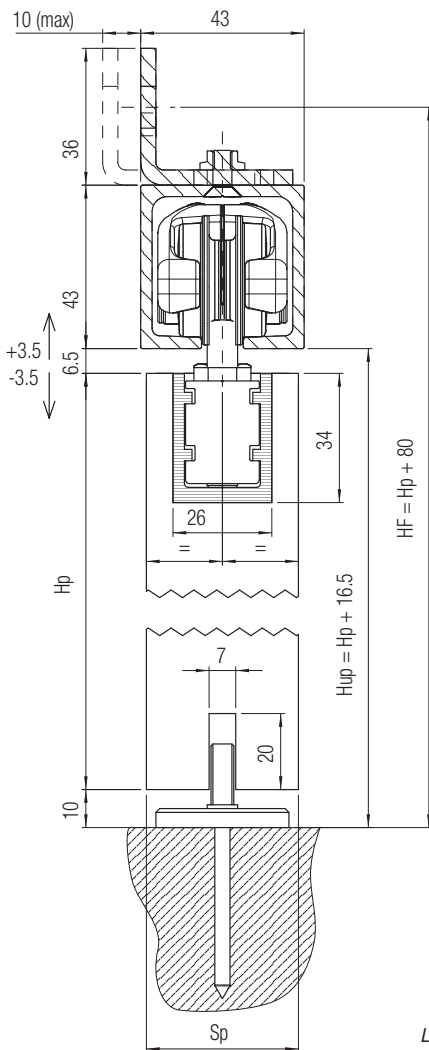
K Art 120 + SYSTEM 0600

Pat-Pending

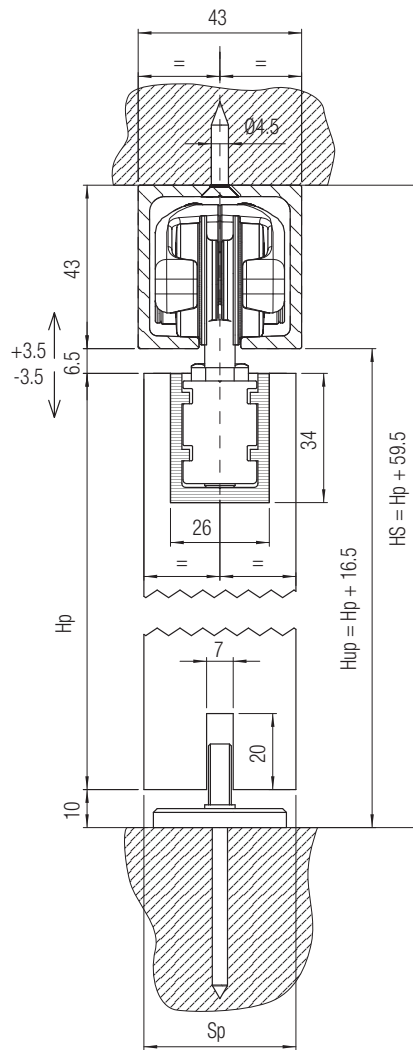
KOBLENZ
BESCHLÄGE - HARDWARE



Befestigung mit Winkel für Wandbefestigung
Fixing with bracket



Befestigung mit Schrauben
Fixing with screws



Lp= Türblattbreite
Hp= Türblatthöhe
Sp= Türblattdicke
HF= Wandbefestigungshöhen
HS= Deckenhöhe
Hup= Durchgangshöhe
P.S.: Alle Höhen beziehen sich auf Einsatz der mitgelieferten, 40mm langen, Schrauben.

Lp= Door leaf width
Hp= Door leaf height
Sp= Panel thickness
HF= Wall fixing heights
HS= Ceiling height
Hup= Height passage opening
N.B. all heights are referred to the use of screws having 40 mm length included in the kit.